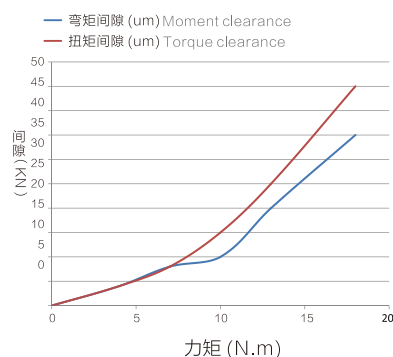
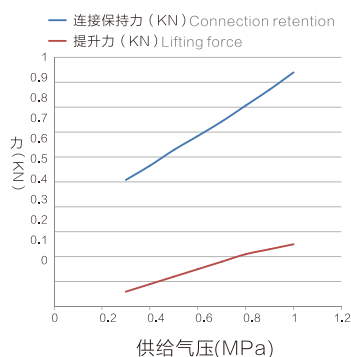


## OQC-005S机器人自动快换(带传感器)

OQC-005S Robot automatic quick changer (with sensor)

- 载重5kg;
- 采用钢球锁紧方式;
- 采用机械式自锁设计;
- 防止气源意外切断时两侧分离;
- 可选配PNP或NPN传感器。
- Payload capacity 5 kg;
- Steel ball lock system;
- Adopt the mechanical self-locking design;
- Prevent separation from separating when source of cut off;
- PNP or NPN sensor is available.

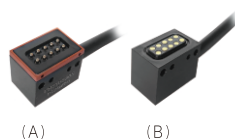


OQC-005S连接力、提升力曲线图 OQC-005S弯矩、扭矩变位曲线图  
OQC-005S Continuous relay, lifting force curve OQC-005S Bending moment and torque changer curve

### 规格参数 Specifications

本体部分 Mainbody	可搬运重量(额定负载)Payload capacity	5kg	
	位置重复精度 Positon repeatability	± 0.02mm	
	静态允许力矩 Static allowable torque	弯矩方向 Bending direction( Mx.My)	12.2N.m
		扭矩方向 Torque direction( Mr)	16.9N.m
	锁紧力(当气压 0.49Mpa时)Tight locking force (When the air pressure is 0.49Mpa)	628N	
	材质 Material	本体 Main body	铝合金 Aluminum alloy
		锁紧机构部分 Locking mechanism	合金钢 Alloy steel
	外形尺寸(锁紧时Lock) Housing diameter(Lock when locked)	Φ49xH53mm	
	产品重量 Product weight	机器人侧 Robot side	0.23kg
		工具侧 Tool side	0.11kg
	拆装结构 Disassembling institutions	钢球定位锁紧 Steel ball position lock	
	拆装动作气压 Disassembling action pressure	0.39~0.7MPa(4~7kgf/cm <sup>2</sup> )	
	允许温度与湿度范围 Allowable temperature and humidity range	0~55℃, 0~95%(不结露 No condensation)	
通用 General	通气孔 Pneumatic port	M5 x6个	
组件 Component (选配 Option)	通用 General	电信号点 Electrical signal	2A x10PIN

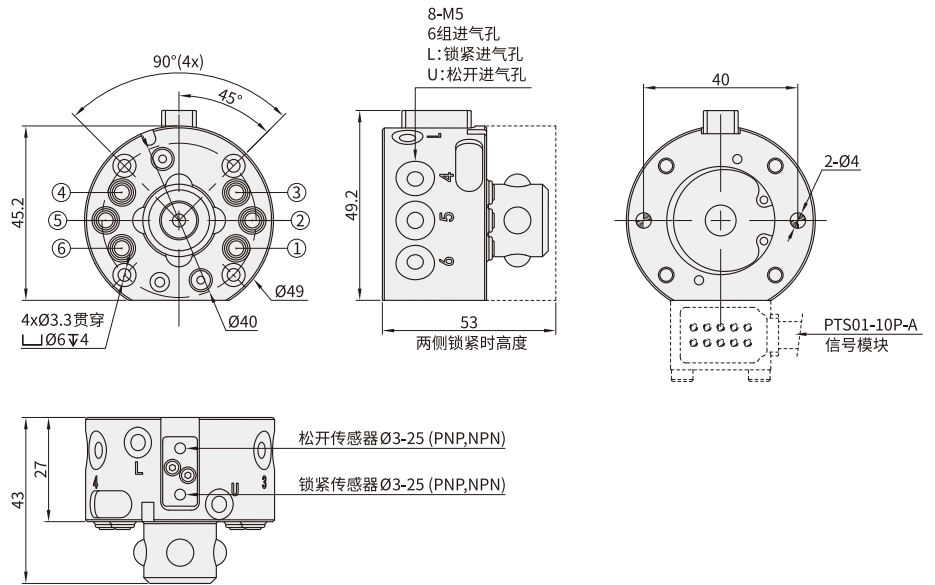
### 模块参数 Module parameter



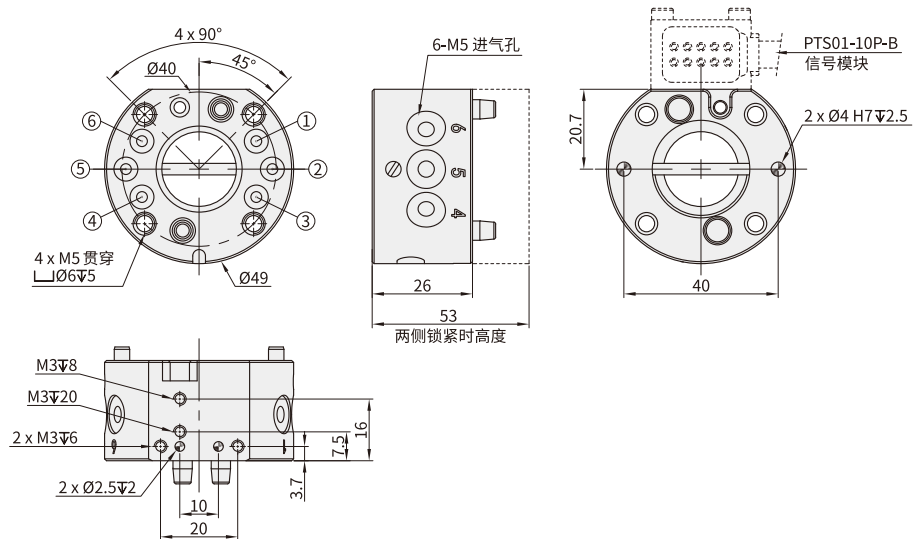
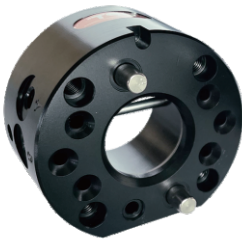
型号 Model	使用于 Used in	工作电压 Operating voltage	工作电流 Working current	电插针 Electric pin	线长 Line length	订货编号 Order number	单价(元) Price(yuan)
PTS01-10P-A	机器人侧 Robot side	50V	1A	10Pin	3M	7.03.01.0022	
PTS01-10P-B	工具侧 Tool side				1.5M	7.03.01.0023	

## 外形尺寸 OVERALL DIMENSIONS

机器人侧: OQC-005S-A  
Robot side  
订货编号: 7.03.01.0001  
Order number  
单价:  
Price



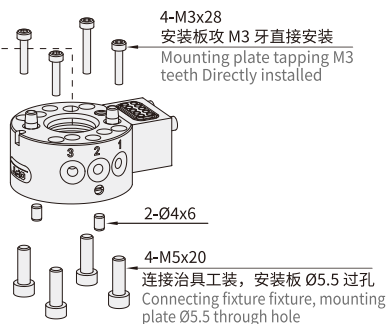
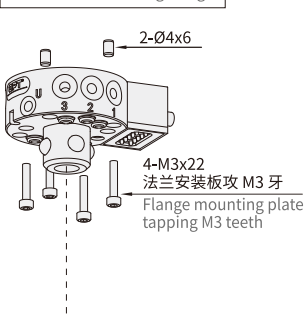
工具侧: OQC-005-B  
Tool side  
订货编号: 7.03.01.0002  
Order number  
单价:  
Price



## 安装说明 INSTALLATION DESCRIPTION

机器人手臂 Robot arm

连接法兰 Connecting flange



电气连接器: PTS01-10P-A  
Electrical connector

电气连接器: PTS01-10P-B  
Electrical connector

