

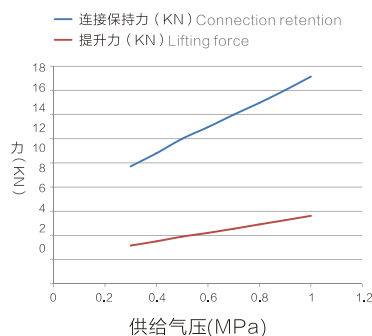
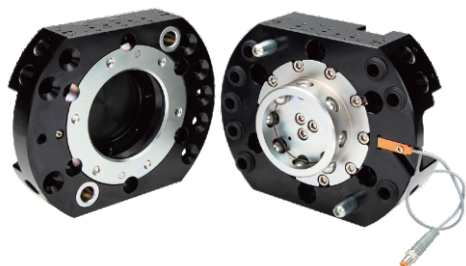
机器人自动快换

ROBOT AUTOMATIC QUICK CHANGER

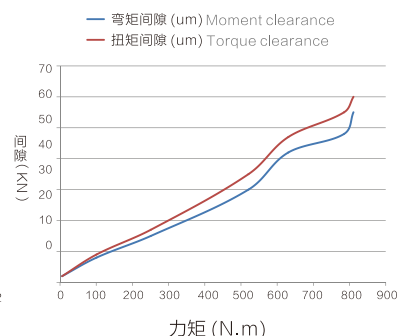
OQC-110机器人自动快换

OQC-110 Robot automatic quick changer

- 载重150kg;
 - 采用钢球锁紧方式;
 - 具有防尘功能;
 - 采用机械式自锁设计;
 - 防止气源意外切断时两侧分离;
 - 锁紧松开动作信号反馈(光电传感器);
 - 面结合确认信号检测(光电传感器);
- Payload capacity 150 kg;
 - Steel ball lock system;
 - With dustproof function;
 - Adopt the mechanical self-locking design;
 - Prevent separation from separating when source of cut off;
 - Lock and release action signal feedback(Photoelectric sensor);
 - Surface combined with onfirmation signal detection (Photoelectric sensor);



OQC-110连接力、提升力曲线图
OQC-110 Continuous relay, lifting force curve



OQC-110弯矩、扭矩变位曲线图
OQC-110 Bending moment and torque changer curve

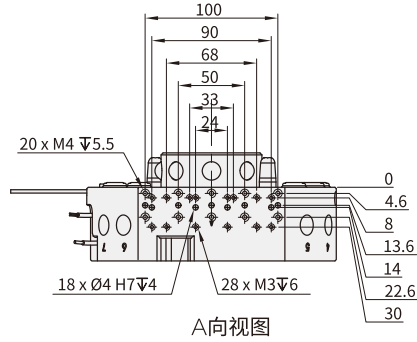
规格参数 Specifications

本体部分 Mainbody	可搬运重量(额定负载)Payload capacity	150kg		
	位置重复精度 Positon repeatability	± 0.02mm		
	静态允许力矩 Static allowable torque	弯矩方向 Bending direction(Mx.My)	784N.m	
		扭矩方向 Torque direction(Mr)	784N.m	
	锁紧力(当气压 0.49Mpa时)Tight locking force (When the air pressure is 0.49Mpa)	12000N		
	材质 Material	本体 Main body	铝合金 Aluminum alloy	
		锁紧机构部分 Locking mechanism	合金钢 Alloy steel	
	外形尺寸(锁紧时Lock) Housing diameter(Lock when locked)	Φ188mmxH93.5mm		
	产品重量 Product weight	机器人侧 Robot side	5.6kg	
		工具侧 Tool side	2.7kg	
拆装结构 Disassembling institutions	钢球定位锁紧 Steel ball position lock			
拆装动作气压 Disassembling action pressure	0.39~0.7MPa(4~7kgf/cm ²)			
允许温度与湿度范围 Allowable temperature and humidity range	0~55℃, 0~95%(不结露No condensation)			
通用 General	通气孔 Pneumatic port	G3/8 x8个		
控制部分 Control body	拆卸确认传感器 Remove confirmation sensor	抓紧动作确认Grasp action confirmation	内置1个接近传感器 a proximity proximity sensor(直流3线式)	
		松开动作确认Loosen action confirmation	内置1个接近传感器 a proximity proximity sensor(直流3线式)	
	在位传感器 Reign sensor	确认工具在位 Confirm tool reign	内置1个接近传感器 a proximity proximity sensor(直流3线式)	
组件 (选配 Option)	通用 General	电信号点 Electrical signal	2A x19PIN/2A x23PIN/20A x8PIN	

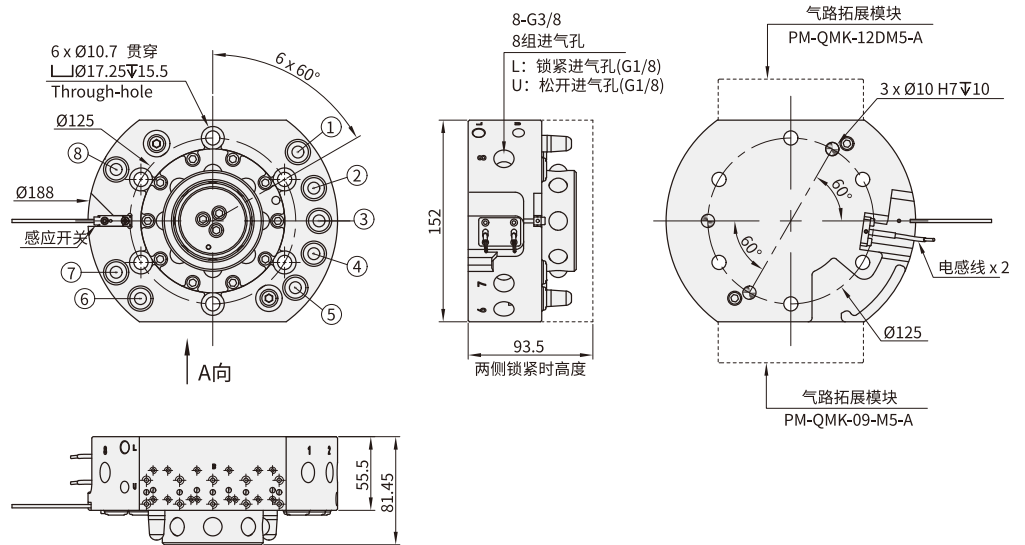
外形尺寸 OVERALL DIMENSIONS

机器人侧 Robot side

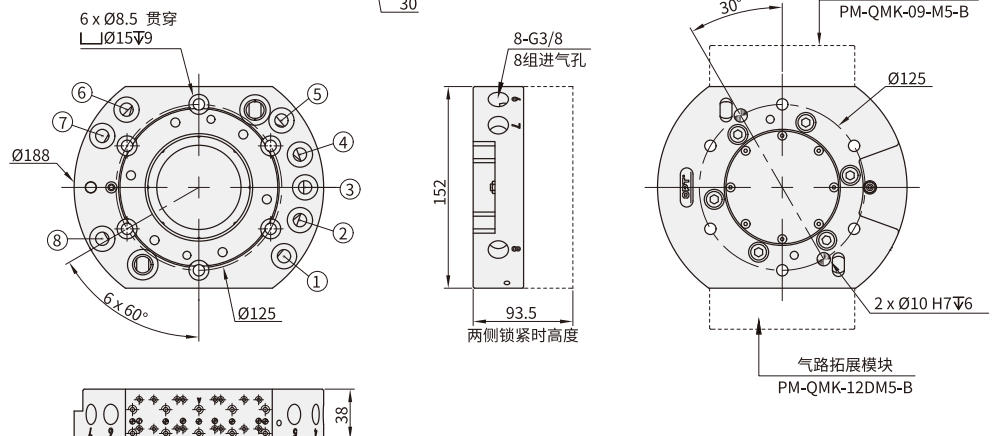
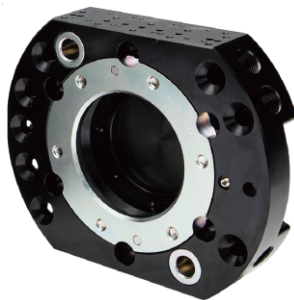
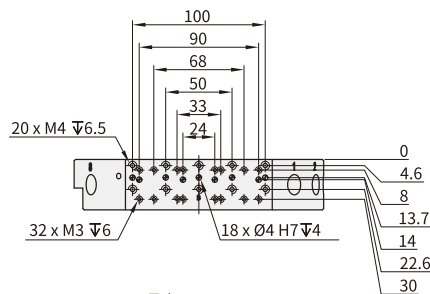
型号 Model number	传感器 Sensor	订货编号 Part number	单价 Price
OQC-110-A	无 Nil	7.03.01.0009	
OQC-110-AN	NPN	7.03.01.0178	
OQC-110-AP	PNP	7.03.01.0179	



A向视图



工具侧: OQC-110-B
Tool side
订货编号: 7.03.01.0010
Order number
单价:
Price

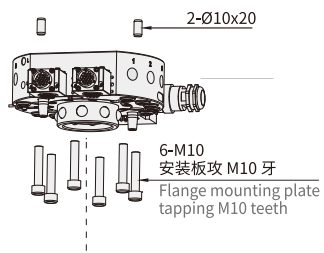


机器人自动快换 ROBOT AUTOMATIC QUICK CHANGER

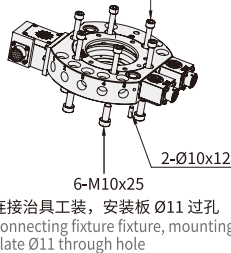
安装说明 INSTALLATION DESCRIPTION

机器人手臂 Robot arm

连接法兰 Connecting flange



6-M8x40
安装板攻 M8 牙直接安装
Mounting plate tapping M8
teeth Directly installed



电气连接器 Electrical connector
二边均可配一个: P TTL /R20-8P-I-A、
P TTL /R05-19P-I-A、 P TTL/R05-23P-I-A

电气连接器 Electrical connector
二边均可配一个: P TTL /R20-8PT-B、
P TTL /R05-19P-I-B、 P TTL /R05-23P-I-B

