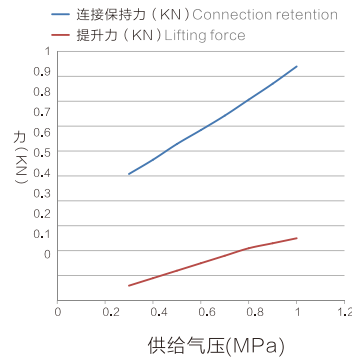
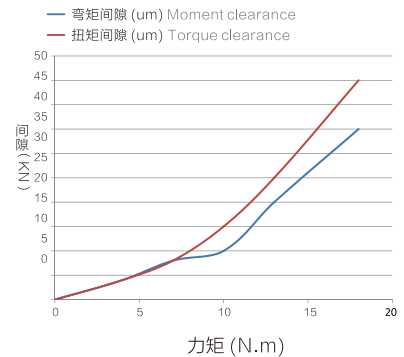


## OQC-005机器人自动快换 OQC-005 Robot automatic quick changer

- 载重5kg;
  - 采用钢球锁紧方式;
  - 采用机械式自锁设计;
  - 防止气源意外切断时两侧分离。
- Payload capacity 5 kg;
  - Steel ball lock system;
  - Adopt the mechanical self-locking design;
  - Prevent separation separation from separating when when source of cut off.



OQC-005连接力、提升力曲线图  
OQC-005 Continuous relay, lifting force curve

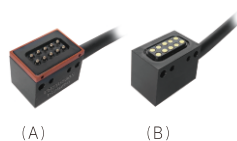


OQC-005弯矩、扭矩变位曲线图  
OQC-005 Bending moment and torque changer curve

### 规格参数 Specifications

本体部分 Mainbody	可搬运重量(额定负载)Payload capacity	5kg		
	位置重复精度 Positon repeatability	±0.02mm		
	静态允许力矩 Static allowable torque	弯矩方向 Bending direction( Mx.My)	12.2N.m	
		扭矩方向 Torque direction( Mr)	16.9N.m	
	锁紧力 (当气压 0.49Mpa时)Tight locking force (When the air pressure is 0.49Mpa)	628N		
	材质 Material	本体 Main body	铝合金 Aluminum alloy	
		锁紧机构部分 Locking mechanism	合金钢 Alloy steel	
	外形尺寸(锁紧时Lock) Housing diameter(Lock when locked)	Φ49xH45.5mm		
	产品重量 Product weight	机器人侧 Robot side	0.23kg	
		工具侧 Tool side	0.11kg	
	拆装结构 Disassembling institutions	钢球定位锁紧Steel ball position lock		
	拆装动作气压 Disassembling action pressure	0.39~0.7MPa(4~7kgf/cm <sup>2</sup> )		
	允许温度与湿度范围 Allowable temperature and humidity range	0~55℃, 0~95%(不结露 No condensation)		
	通用 General	通气孔 Pneumatic port	M5 x6个	
组件(选配) Component (Option)	通用 General	电信号点 Electrical signal	2A x10PIN	

### 模块参数 Module parameter

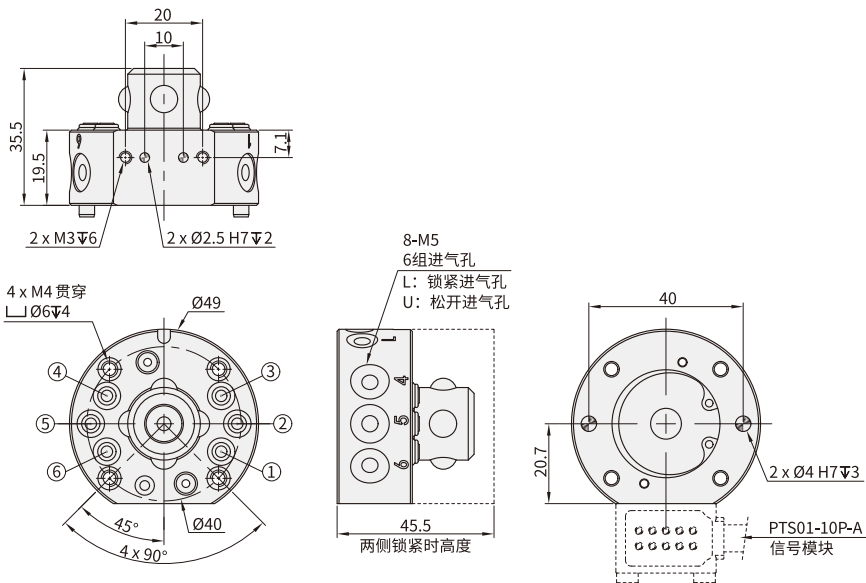


型号 Model	使用于 Used in	工作电压 Operating voltage	工作电流 Working current	电插针 Electric pin	线长 Line length	订货编号 Order number	单价(元) Price(yuan)
PTS01-10P-A	机器人侧 Robot side	50V	1A	10Pin	3M	7.03.01.0022	
PTS01-10P-B	工具侧 Tool side				1.5M	7.03.01.0023	

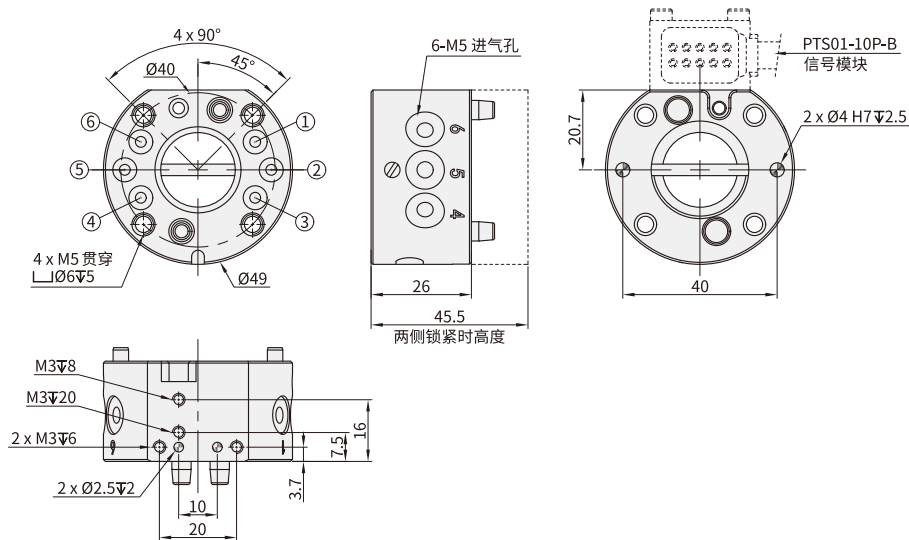
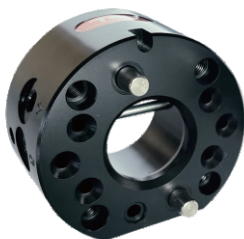
# 机器人自动快换 ROBOT AUTOMATIC QUICK CHANGER

## 外形尺寸 OVERALL DIMENSIONS

机器人侧: OQC-005-A  
Robot side  
订货编号: 7.03.01.0001  
Order number  
单价:  
Price



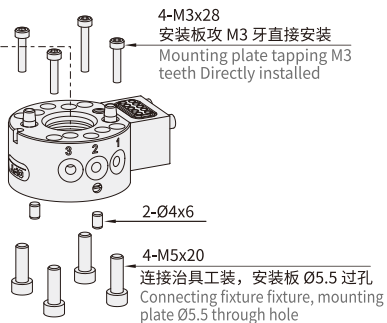
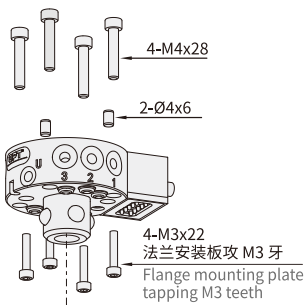
工具侧: OQC-005-B  
Tool side  
订货编号: 7.03.01.0002  
Order number  
单价:  
Price



## 安装说明 INSTALLATION DESCRIPTION

机器人手臂 Robot arm

连接法兰 Connecting flange



电气连接器: PTS01-10P-A  
Electrical connector

电气连接器: PTS01-10P-B  
Electrical connector

媒体直通用于气动和真空  
Media through for pneumatic and vacuum

